



PARS ETHYLENE KISH CO.

WE TAKE CARE ABOUT THE FUTURE

SCREW FITTING

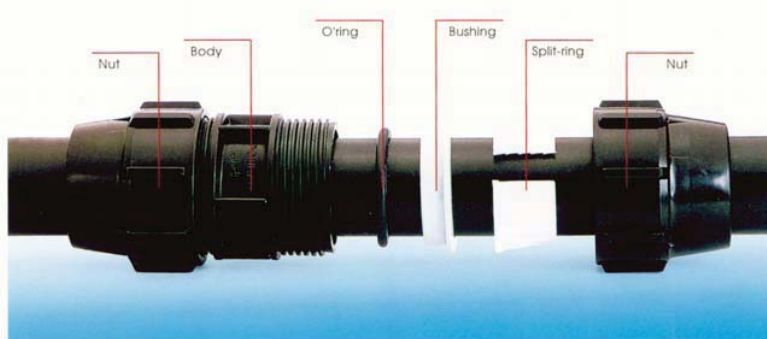
www.parsethylene-kish.com



Compression fittings

compression fittings consist of:

- Body
- Nuts
- Split-rings
- Bushings
- O'rings



Body and Nuts

Body and Nuts are made of polypropylene copolymer which is a linear polymer of propylene. Its properties are quite similar to those of polyethylene except that it has greater rigidity and heat resistance and low moisture absorbency.

Split-ring

Split-rings are made of polyacetal which is a strong, hard, highly crystalline thermoplastic and is known as engineering plastic. polyacetal has high melting point, excellent creep resistance and is highly chemical resistant.

Bushings

Bushings are made of polyethylene. The characteristics of PE are chemical resistance to solvents, acids and alkalines, toughness and flexibility.

O'rings

O'rings are made of a combination of natural rubber (NR) and styrene - butadiene - rubber (SBR).

Office Address:

No.8 (Suit 6), Nour Alley, Africa St., Tehran/IRAN.....

Tel.: (+98 21) 88 67 79 65 , 88 67 79 66, 88 67 39 19 , 88 67 39 18 - Fax: (+98 21) 88 87 85 81

www.parsethylene-kish.com



Male Adaptor



Description	Nom Dia (mm./Inch)	Code	Pack
Male Adaptor	20 x 1/2"	010 - 020 - 02	150
	25 x 3/4"	010 - 025 - 03	100
	32 x 1"	010 - 032 - 10	100
	40 x 1 1/4"	010 - 040 - 11	45
	50 x 1 1/2"	010 - 050 - 12	30
	50 x 2"	010 - 050 - 20	30
	63 x 2"	010 - 063 - 20	20
	75 x 2"	010 - 075 - 20	11
	75 x 2 1/2"	010 - 075 - 22	11
	90 x 3"	010 - 090 - 30	9
	110 x 4"	010 - 110 - 40	8
	125 x 4"	010 - 125 - 40	
	125 x 5"	010 - 125 - 50	

Female Adaptor



Description	Nom Dia (mm./Inch)	Code	Pack
Female Adaptor	20 x 1/2"	011 - 020 - 02	150
	25 x 3/4"	011 - 025 - 03	150
	32 x 1"	011 - 032 - 10	100
	40 x 1 1/4"	011 - 040 - 11	45
	50 x 1 1/2"	011 - 050 - 12	35
	63 x 2"	011 - 063 - 20	20
	75 x 2"	011 - 075 - 20	13
	75 x 2 1/2"	011 - 075 - 22	13
	90 x 3"	011 - 090 - 30	10
	110 x 4"	011 - 110 - 40	8
	125 x 4"	011 - 125 - 40	6
	125 x 5"	011 - 125 - 50	6

Straight Coupling



Description	Nom Dia (mm./Inch)	Code	Pack
Straight Coupling	20 x 20	012 - 020 - 00	135
	25 x 25	012 - 025 - 00	96
	32 x 32	012 - 032 - 00	70
	40 x 40	012 - 040 - 00	30
	50 x 50	012 - 050 - 00	20
	63 x 63	012 - 063 - 00	12
	75 x 75	012 - 075 - 00	6
	90 x 90	012 - 090 - 00	6
	110 x 110	012 - 110 - 00	4
	125 x 125	012 - 125 - 00	3

Office Address:

No.8 (Suit 6), Nour Alley, Africa St., Tehran/IRAN.....

Tel.: (+98 21) 88 67 79 65 , 88 67 79 66, 88 67 39 19 , 88 67 39 18 - Fax: (+98 21) 88 87 85 81

www.parsethylene-kish.com

Reducing Coupling



Description	Nom Dia. (mm.)	Code	Pack
Reducing Coupling	25 x 20	013 - 025 - 20	100
	32 x 20	013 - 032 - 20	80
	32 x 25	013 - 032 - 25	75
	40 x 25	013 - 040 - 25	50
	40 x 32	013 - 040 - 32	40
	50 x 32	013 - 050 - 32	30
	50 x 40	013 - 050 - 40	22
	63 x 32	013 - 063 - 32	18
	63 x 40	013 - 063 - 40	16
	63 x 50	013 - 063 - 50	14
	75 x 50	013 - 075 - 50	12
	75 x 63	013 - 075 - 63	9
	90 x 63	013 - 090 - 63	6
	90 x 75	013 - 090 - 75	6
	110 x 63	013 - 110 - 63	6
	110 x 75	013 - 110 - 75	6
110 x 90	013 - 110 - 90	4	
125 x 110	013 - 125 - 11	3	

90° Elbow



Description	Nom Dia. (mm.)	Code	Pack
90° Elbow	20 x 20	032 - 020 - 00	100
	25 x 25	032 - 025 - 00	80
	32 x 32	032 - 032 - 00	50
	40 x 40	032 - 040 - 00	26
	50 x 50	032 - 050 - 00	15
	63 x 63	032 - 063 - 00	9
	75 x 75	032 - 075 - 00	5
	90 x 90	032 - 090 - 00	4
	110 x 110	032 - 110 - 00	4
	125 x 125	032 - 125 - 00	4

90° Elbow with Threaded Male Off Take



Description	Nom Dia. (mm./Inch)	Code	Pack
90° Elbow with Threaded Male Off Take	20 x 1/2"	030 - 020 - 02	140
	25 x 3/4"	030 - 025 - 03	100
	32 x 1"	030 - 032 - 10	88
	40 x 1 1/4"	030 - 040 - 11	45
	50 x 1 1/2"	030 - 050 - 12	25
	63 x 1 1/2"	030 - 063 - 12	12
	63 x 2"	030 - 063 - 20	12
	75 x 2"	030 - 075 - 20	
	75 x 2 1/2"	030 - 075 - 22	
	90 x 2 1/2"	030 - 090 - 22	5
	90 x 3"	030 - 090 - 30	5
	110 x 3"	030 - 110 - 30	6
	110 x 4"	030 - 110 - 40	6

Office Address:

No.8 (Suit 6), Nour Alley, Africa St., Tehran/IRAN.....

Tel.: (+98 21) 88 67 79 65 , 88 67 79 66, 88 67 39 19 , 88 67 39 18 - Fax: (+98 21) 88 87 85 81

www.parsethylene-kish.com



90° Elbow

With Threaded Female Off Take



Description	Nom Dia. (mm./Inch)	Code	Pack
90° Elbow with Threaded Female off Take	20 × 1/2"	031 - 020 - 02	112
	25 × 3/4"	031 - 025 - 03	112
	32 × 1"	031 - 032 - 10	80
	40 × 1 1/4"	031 - 040 - 11	40
	50 × 1 1/2"	031 - 050 - 12	22
	63 × 2"	031 - 063 - 20	13
	75 × 2"	031 - 075 - 20	8
	75 × 2 1/2"	031 - 075 - 22	8
	90 × 2 1/2"	031 - 090 - 22	5
	90 × 3"	031 - 090 - 30	5
	110 × 3"	031 - 110 - 30	4
	110 × 4"	031 - 110 - 40	4

90° Tee

With Threaded Male Off Take Branch



Description	Nom Dia. (mm./Inch)	Code	Pack
90° Tee with Threaded Male off Take Branch	20 × 1/2" × 20	040 - 020 - 02	80
	25 × 1/2" × 25	040 - 025 - 02	80
	25 × 3/4" × 25	040 - 025 - 03	80
	32 × 1/2" × 32	040 - 032 - 02	50
	32 × 3/4" × 32	040 - 032 - 03	50
	32 × 1" × 32	040 - 032 - 10	50
	40 × 1" × 40	040 - 040 - 10	24
	40 × 1 1/4" × 40	040 - 040 - 11	24
	50 × 1 1/4" × 50	040 - 050 - 11	14
	50 × 1 1/2" × 50	040 - 050 - 12	14
	63 × 1" × 63	040 - 063 - 10	8
	63 × 1 1/2" × 63	040 - 063 - 12	8
	63 × 2" × 63	040 - 063 - 20	8
	75 × 1 1/2" × 75	040 - 075 - 12	6
	75 × 2" × 75	040 - 075 - 20	6
	75 × 2 1/2" × 75	040 - 075 - 22	6
	90 × 2" × 90	040 - 090 - 20	8
	90 × 2 1/2" × 90	040 - 090 - 22	8
	90 × 3" × 90	040 - 090 - 30	8
	110 × 3" × 110	040 - 110 - 30	3
	110 × 4" × 110	040 - 110 - 40	3
	125 × 4" × 125	040 - 125 - 40	3
	125 × 5" × 125	040 - 125 - 50	3

Office Address:

No.8 (Suit 6), Nour Alley, Africa St., Tehran/IRAN.....

Tel.: (+98 21) 88 67 79 65 , 88 67 79 66, 88 67 39 19 , 88 67 39 18 - Fax: (+98 21) 88 87 85 81

www.parsethylene-kish.com



90° Tee

With Threaded Female Off Take Branch



Description	Nom Dia (mm./Inch)	Code	Pack
90° Tee with Threaded Female off Take Branch	20 x 1/2" x 20	041 - 020 - 02	80
	25 x 1/2" x 25	041 - 025 - 02	75
	25 x 3/4" x 25	041 - 025 - 03	75
	32 x 1/2" x 32	041 - 032 - 02	50
	32 x 3/4" x 32	041 - 032 - 03	50
	32 x 1" x 32	041 - 032 - 10	50
	40 x 1 1/4" x 40	041 - 040 - 11	24
	50 x 1 1/2" x 50	041 - 050 - 12	15
	63 x 2" x 63	041 - 063 - 20	10
	75 x 2" x 75	041 - 075 - 20	6
	75 x 2 1/2" x 75	041 - 075 - 22	6
	90 x 2" x 90	041 - 090 - 20	5
	90 x 2 1/2" x 90	041 - 090 - 22	5
	90 x 3" x 90	041 - 090 - 30	5
	110 x 3" x 110	041 - 110 - 30	4
110 x 4" x 110	041 - 110 - 40	4	

Office Address:

No.8 (Suit 6), Nour Alley, Africa St., Tehran/IRAN.....

Tel.: (+98 21) 88 67 79 65 , 88 67 79 66, 88 67 39 19 , 88 67 39 18 - Fax: (+98 21) 88 87 85 81

www.parsethylene-kish.com



90° Tee



Description	Nom Dia (mm./Inch)	Code	Pack
90° Tee	20 x 20 x 20	014 - 020 - 00	70
	25 x 25 x 25	014 - 025 - 00	50
	32 x 32 x 32	014 - 032 - 00	34
	40 x 40 x 40	014 - 040 - 00	16
	50 x 50 x 50	014 - 050 - 00	10
	63 x 63 x 63	014 - 063 - 00	7
	75 x 75 x 75	014 - 075 - 00	5
	90 x 90 x 90	014 - 090 - 00	4
	110 x 110 x 110	014 - 110 - 00	2
	125 x 125 x 125	014 - 125 - 00	2

Reducer Tee



Description	Nom Dia (mm./Inch)	Code	Pack
90° Tee	25 x 20 x 25	014 - 025 - 20	60
	32 x 20 x 32	014 - 032 - 20	40
	32 x 25 x 32	014 - 032 - 25	40
	40 x 25 x 40	014 - 040 - 25	20
	40 x 32 x 40	014 - 040 - 32	20
	50 x 32 x 50	014 - 050 - 32	11
	50 x 40 x 50	014 - 050 - 40	10
	63 x 32 x 63	014 - 063 - 32	8
	63 x 40 x 63	014 - 063 - 40	7
	63 x 50 x 63	014 - 063 - 50	6
	75 x 50 x 75	014 - 075 - 50	5
	75 x 63 x 75	014 - 075 - 63	7
	90 x 63 x 90	014 - 090 - 63	4
	90 x 75 x 90	014 - 090 - 75	4
	110 x 63 x 110	014 - 110 - 63	3
	110 x 75 x 110	014 - 110 - 75	3
	110 x 90 x 110	014 - 110 - 90	2
	125 x 90 x 125	014 - 125 - 90	2
	125 x 110 x 125	014 - 125 - 11	2

Office Address:

No.8 (Suit 6), Nour Alley, Africa St., Tehran/IRAN.....

Tel.: (+98 21) 88 67 79 65 , 88 67 79 66, 88 67 39 19 , 88 67 39 18 - Fax: (+98 21) 88 87 85 81

www.parsethylene-kish.com



Flanged Adaptor

In addition to mentioned components, Flanged Adaptors have a metal ring 8mm thick, covered by a layer of chromium.

Description	Nom Dia (mm./Inch)	Code	Pack
Flanged Adaptors	63 x 2"	018 - 063 - 20	12
	75 x 2 1/2"	018 - 075 - 22	12
	90 x 3"	018 - 090 - 30	6
	90 x 4"	018 - 090 - 40	6
	110 x 4"	018 - 110 - 40	6
	125 x 5"	018 - 125 - 50	4



End Plug



Description	Nom Dia (mm.)	Code	Pack
End Plug	20	070 - 020 - 00	180
	25	070 - 025 - 00	140
	32	070 - 032 - 00	96
	40	070 - 040 - 00	45
	50	070 - 050 - 00	42
	63	070 - 063 - 00	24
	75	070 - 075 - 00	15
	90	070 - 090 - 00	9
	110	070 - 110 - 00	5
	125	070 - 125 - 00	3

Office Address:

No.8 (Suit 6), Nour Alley, Africa St., Tehran/IRAN.....

Tel.: (+98 21) 88 67 79 65 , 88 67 79 66, 88 67 39 19 , 88 67 39 18 - Fax: (+98 21) 88 87 85 81

www.parsethylene-kish.com



Welded Flanges

Welded Flanges are made of high density polyethylene (HD-PE) which is also resistant to solvents, acids and alkaline.

Description	Nom Dia (mm.)	Class	Code	Pack
Welded Flanges (6-10 Atm)	63	6 Atm	017 - 063 - 06	48
	63	10 Atm	017 - 063 - 10	48
	75	6 Atm	017 - 075 - 06	48
	75	10 Atm	017 - 075 - 10	48
	90	6 Atm	017 - 090 - 06	44
	90	10 Atm	017 - 090 - 10	44
	110	6 Atm	017 - 110 - 06	25
	110	10 Atm	017 - 110 - 10	25
	125	6 Atm	017 - 125 - 06	20
	125	10 Atm	017 - 125 - 10	20
	140	6 Atm	017 - 140 - 06	12
	140	10 Atm	017 - 140 - 10	12
	160	6 Atm	017 - 160 - 06	10
	160	10 Atm	017 - 160 - 10	10
	180	6 Atm	017 - 180 - 06	6
	180	10 Atm	017 - 180 - 10	6
	200	6 Atm	017 - 200 - 06	6
	200	10 Atm	017 - 200 - 10	6
	225	6 Atm	017 - 225 - 06	8
	225	10 Atm	017 - 225 - 10	8
250	6 Atm	017 - 250 - 06	6	
250	10 Atm	017 - 250 - 10	6	
315	6 Atm	017 - 315 - 06	4	
315	10 Atm	017 - 315 - 10	4	
355	6 Atm	017 - 355 - 06		
355	10 Atm	017 - 355 - 10		
400	6 Atm	017 - 400 - 06		
400	10 Atm	017 - 400 - 10		



Office Address:

No.8 (Suit 6), Nour Alley, Africa St., Tehran/IRAN.....

Tel.: (+98 21) 88 67 79 65 , 88 67 79 66, 88 67 39 19 , 88 67 39 18 - Fax: (+98 21) 88 87 85 81

www.parsethylene-kish.com



Clamp Saddle

Clamp Saddles have quite different structure and are consist of two parts, (base and upper part). Both pieces are made of polypropylene - copolymer. According to their sizes clamp saddles may have two, four, six or eight bolts.



Description	Nom Dia. (mm./Inch)	Code	Pack	No. of Bolts
Clamp Saddles	20 x 1/2"	015 - 020 - 02	200	2
	25 x 1/2"	015 - 025 - 02	160	2
	25 x 3/4"	015 - 025 - 03	160	2
	32 x 1/2"	015 - 032 - 02	112	2
	32 x 3/4"	015 - 032 - 03	112	2
	40 x 1/2"	015 - 040 - 02	112	2
	40 x 3/4"	015 - 040 - 03	112	2
	40 x 1"	015 - 040 - 10	112	2
	50 x 1/2"	015 - 050 - 02	96	2
	50 x 3/4"	015 - 050 - 03	96	2
	50 x 1"	015 - 050 - 10	96	2
	63 x 1/2"	015 - 063 - 02	48	4
	63 x 3/4"	015 - 063 - 03	48	4
	63 x 1"	015 - 063 - 10	48	4
	63 x 1 1/2"	015 - 063 - 12	40	4
	63 x 2"	015 - 063 - 20	40	4
	75 x 1/2"	015 - 075 - 02	48	4
	75 x 3/4"	015 - 075 - 03	48	4
	75 x 1"	015 - 075 - 10	48	4
	75 x 1 1/2"	015 - 075 - 12	40	4
	75 x 2"	015 - 075 - 20	40	4
	90 x 1/2"	015 - 090 - 02	30	4
	90 x 3/4"	015 - 090 - 03	30	4
	90 x 1"	015 - 090 - 10	30	4
	90 x 1 1/2"	015 - 090 - 12	26	4
	90 x 2"	015 - 090 - 20	26	4
	110 x 1/2"	015 - 110 - 02	24	4
	110 x 3/4"	015 - 110 - 03	24	4
	110 x 1"	015 - 110 - 10	24	4
	110 x 1 1/2"	015 - 110 - 12	25	4
	110 x 2"	015 - 110 - 20	25	4
	125 x 1/2"	015 - 125 - 02	24	4
125 x 3/4"	015 - 125 - 03	24	4	
125 x 1"	015 - 125 - 10	24	4	
125 x 1 1/2"	015 - 125 - 12	20	4	
125 x 2"	015 - 125 - 20	20	4	
160 x 1/2"	015 - 160 - 02	10	6	
160 x 3/4"	015 - 160 - 03	10	6	
160 x 1"	015 - 160 - 10	10	6	
160 x 1 1/2"	015 - 160 - 12	8	6	
160 x 2"	015 - 160 - 20	8	6	
160 x 3"	015 - 160 - 30	8	6	
200 x 1/2"	015 - 200 - 02	8	6	
200 x 3/4"	015 - 200 - 03	8	6	
200 x 1"	015 - 200 - 10	8	6	
200 x 1 1/2"	015 - 200 - 12	8	6	
200 x 2"	015 - 200 - 20	8	6	
200 x 3"	015 - 200 - 30	7	6	
200 x 4"	015 - 200 - 40	6	6	
250 x 1/2"	015 - 250 - 02	6	6	
250 x 3/4"	015 - 250 - 03	6	6	
250 x 1"	015 - 250 - 10	6	6	
250 x 1 1/2"	015 - 250 - 12	6	6	
250 x 2"	015 - 250 - 20	6	6	
250 x 3"	015 - 250 - 30	6	6	
250 x 4"	015 - 250 - 40	6	6	

Office Address:

No.8 (Suit 6), Nour Alley, Africa St., Tehran/IRAN.....

Tel.: (+98 21) 88 67 79 65 , 88 67 79 66, 88 67 39 19 , 88 67 39 18 - Fax: (+98 21) 88 87 85 81

www.parsethylene-kish.com

Nipple



Description	Nom Dia (mm./Inch)	Code	Pack
Nipple High Impact Tesisistence Polyacetal	1/2 x 1/2"	053 - 102 - 02	1000
	3/4 x 3/4"	053 - 103 - 03	600
	1 x 1"	053 - 110 - 10	300
	1 1/4 x 1 1/4"	053 - 111 - 11	200
	1 1/2 x 1 1/2"	053 - 112 - 12	140
	2 x 2"	053 - 120 - 20	84

Office Address:

No.8 (Suit 6), Nour Alley, Africa St., Tehran/IRAN.....

Tel.: (+98 21) 88 67 79 65 , 88 67 79 66, 88 67 39 19 , 88 67 39 18 - Fax: (+98 21) 88 87 85 81

www.parsethylene-kish.com



Male Connector (Barbed- Threaded)



Description	Nom Dia (mm./Inch)	Code	Pack
Male Connector (Barbed-Threaded)	16 x 1/2"	055 - 016 - 00	1200
	12 x 1/2"	055 - 012 - 00	1500

Straight Coupling (Barbed)



Description	Nom Dia (mm.)	Code	Pack
Straight Coupling (Barbed)	16 x 16	052 - 016 - 00	2000

90° Tee (Barbed)



Description	Nom Dia (mm.)	Code	Pack
90° Tee (Barbed)	16 x 16 x 16	054 - 016 - 00	1100

Line End



Description	Nom Dia (mm.)	Code	Pack
Line End	16	056 - 016 - 00	1200

Office Address:

No.8 (Suit 6), Nour Alley, Africa St., Tehran/IRAN.....

Tel.: (+98 21) 88 67 79 65 , 88 67 79 66, 88 67 39 19 , 88 67 39 18 - Fax: (+98 21) 88 87 85 81

www.parsethylene-kish.com



Ball Valve (Threaded Male)



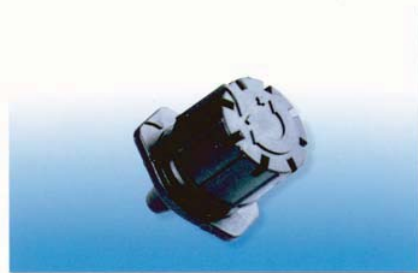
Description	Nom Dia (mm.)	Code	Pack
Ball Valve Threaded Male	1/2"	058 - 016 - 02	400

Adjustable Bubbler - barded



Description	Nom Dia (mm.)	Code	Pack
Adjustable Bubbler barded	1/2"	110 - 016 - 00	100

Adjustable on Line Driper



Description	Nom Dia (mm.)	Code	Pack
Adjustable on Line Driper	8	051 - 008 - 00	5800

Office Address:

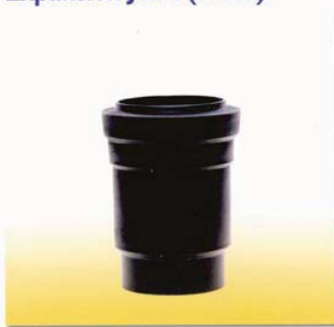
No.8 (Suit 6), Nour Alley, Africa St., Tehran/IRAN.....

Tel.: (+98 21) 88 67 79 65 , 88 67 79 66, 88 67 39 19 , 88 67 39 18 - Fax: (+98 21) 88 87 85 81

www.parsethylene-kish.com

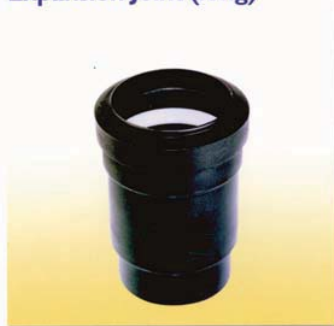


Expansion Joint (short)



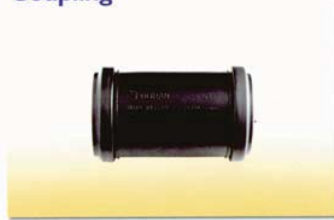
Description	Nom Dia (mm.)	Code	Pack
Expansion Joint (short)	50	112 - 050 - 01	70
	63	112 - 063 - 01	45
	75	112 - 075 - 01	30
	90	112 - 090 - 01	24
	110	112 - 110 - 01	12
	125	112 - 125 - 01	7
	160	112 - 160 - 01	9

Expansion Joint (long)



Description	Nom Dia (mm.)	Code	Pack
Expansion Joint (long)	63	112 - 063 - 02	30
	75	112 - 075 - 02	20
	90	112 - 090 - 02	12
	110	112 - 110 - 02	7
	125	112 - 125 - 02	6
	160	112 - 160 - 02	6

Coupling



Description	Nom Dia (mm.)	Code	Pack
Coupling	63	118 - 063 - 00	44
	75	118 - 075 - 00	
	90	118 - 090 - 00	
	110	118 - 110 - 00	

Reducer



Description	Nom Dia (mm.)	Code	Pack
Reducer	63 x 50	113 - 063 - 50	120
	75 x 50	113 - 075 - 50	140
	75 x 63	113 - 075 - 63	115
	90 x 63	113 - 090 - 63	84
	90 x 75	113 - 090 - 75	84
	110 x 63	113 - 110 - 63	60
	110 x 75	113 - 110 - 75	60
	110 x 90	113 - 110 - 90	48
	125 x 110	113 - 125 - 11	28
	160 x 110	113 - 160 - 11	22
	160 x 125	113 - 160 - 12	22

Office Address:

No.8 (Suit 6), Nour Alley, Africa St., Tehran/IRAN.....

Tel.: (+98 21) 88 67 79 65 , 88 67 79 66, 88 67 39 19 , 88 67 39 18 - Fax: (+98 21) 88 87 85 81

www.parsethylene-kish.com



90° Tee



Description	Nom Dia. (mm.)	Code	Pack
90° Tee	50 x 50 x 50	114 - 050 - 90	72
	63 x 50 x 63	063 - 050 - 90	35
	63 x 63 x 63	114 - 063 - 90	35
	75 x 75 x 75	114 - 075 - 90	18
	90 x 90 x 90	114 - 090 - 90	15
	110 x 63 x 110	110 - 063 - 90	10
	110 x 110 x 110	114 - 110 - 90	8
	125 x 125 x 125	114 - 125 - 90	6
	160 x 110 x 160	160 - 110 - 90	6
	160 x 160 x 160 (4)	114 - 160 - 90	6
	160 x 160 x 160 (6)	214 - 160 - 90	6

45° Tee



Description	Nom Dia. (mm.)	Code	Pack
45° Tee	50 x 50 x 50	114 - 050 - 45	50
	63 x 50 x 63	063 - 050 - 45	28
	63 x 63 x 63	114 - 063 - 45	25
	75 x 63 x 75	075 - 063 - 45	15
	75 x 75 x 75	114 - 075 - 45	15
	90 x 63 x 90	090 - 063 - 45	12
	90 x 90 x 90	114 - 090 - 45	10
	110 x 63 x 110	110 - 063 - 45	8
	110 x 75 x 110	110 - 075 - 45	8
	110 x 90 x 110	110 - 090 - 45	6
	110 x 110 x 110	114 - 110 - 45	6
	125 x 110 x 125	125 - 110 - 45	4
	125 x 125 x 125	114 - 125 - 45	4
	160 x 110 x 160	160 - 110 - 45	5
	160 x 160 x 160	114 - 160 - 45	5

Access Tee 45° - 90°



Description	Nom Dia. (mm.)	Code	Pack
Access Tee 45° - 90°	63 x 63 x 63	115 - 063 - 45	20
	63 x 63 x 63	115 - 063 - 90	26
	110 x 110 x 110	115 - 110 - 90	8

Office Address:

No.8 (Suit 6), Nour Alley, Africa St., Tehran/IRAN.....

Tel.: (+98 21) 88 67 79 65 , 88 67 79 66, 88 67 39 19 , 88 67 39 18 - Fax: (+98 21) 88 87 85 81

www.parsethylene-kish.com



Access Cap



Description	Nom Dia. (mm.)	Code	Pack
Access Cap	50	116 - 050 - 00	
	63	116 - 063 - 00	75
	75	116 - 075 - 00	
	90	116 - 090 - 00	
	110	116 - 110 - 00	34
	125	116 - 125 - 00	

90° Elbow 4, 6 and 10 Atm



Description	Nom Dia. (mm.)	Code	Pack
90° Elbow 4, 6 and 10 Atm	50 x 50 (4)	132 - 050 - 90	100
	63 x 63 (4)	132 - 063 - 90	48
	75 x 75 (4)	132 - 075 - 90	40
	90 x 90 (4)	132 - 090 - 90	25
	110 x 110 (4)	132 - 110 - 90	16
	125 x 125 (4)	132 - 125 - 90	8
	160 x 160 (4)	132 - 160 - 90	6
	160 x 160 (6)	232 - 160 - 90	6
	160 x 160 (10)	332 - 160 - 90	

45° Elbow



Description	Nom Dia. (mm.)	Code	Pack
45° Elbow	50	132 - 050 - 45	96
	63	132 - 063 - 45	70
	75	132 - 075 - 45	40
	90	132 - 090 - 45	25
	110	132 - 110 - 45	15
	125	132 - 125 - 45	10
	160	132 - 160 - 45	8

Office Address:

No.8 (Suit 6), Nour Alley, Africa St., Tehran/IRAN.....

Tel.: (+98 21) 88 67 79 65 , 88 67 79 66, 88 67 39 19 , 88 67 39 18 - Fax: (+98 21) 88 87 85 81

www.parsethylene-kish.com



Tubular "S" Outlet



Description	Nom Dia (mm.)	Code	Pack
Tubular "S" Outlet	50	150 - 050 - 00	40
	63	150 - 063 - 00	24
	75	150 - 075 - 00	12
	90	150 - 090 - 00	7
	110	150 - 110 - 00	6

Double Branch



Description	Nom Dia (mm.)	Code	Pack
Double Branch	63 x 63 x 63	119 - 063 - 00	18
	110 x 110 x 110	119 - 110 - 00	

Pipe Clip



Description	Nom Dia (mm.)	Code	Pack
Pipe Clip	63	082 - 063 - 00	200
	110	082 - 110 - 00	150

Office Address:

No.8 (Suit 6), Nour Alley, Africa St., Tehran/IRAN.....

Tel.: (+98 21) 88 67 79 65 , 88 67 79 66, 88 67 39 19 , 88 67 39 18 - Fax: (+98 21) 88 87 85 81

www.parsethylene-kish.com



Temporary Plug



Description	Nom Dia (mm./Inch)	Code	Pack
Temporary Plug	50	080-050-00	
	63	080-063-00	240
	75	080-075-00	220
	90	080-090-00	150
	110	080-110-00	100
	125	080-125-00	
	160	080-160-00	

Test Plug



Description	Nom Dia (mm./Inch)	Code	Pack
Test Plug	50	081-050-00	500
	63	081-063-00	300
	75	081-075-00	250
	90	081-090-00	150
	110	081-110-00	90
	125	081-125-00	65
	160	081-160-00	40

Duble Branch



Description	Nom Dia (mm./Inch)	Code	Pack
Duble Branch	63 x 63 x 63 x 63	117-063-00	15
	110 x 110 x 110 x 110	117-110-00	4

Office Address:

No.8 (Suit 6), Nour Alley, Africa St., Tehran/IRAN.....

Tel.: (+98 21) 88 67 79 65 , 88 67 79 66, 88 67 39 19 , 88 67 39 18 - Fax: (+98 21) 88 87 85 81

www.parsethylene-kish.com